

THE EMPOWERING MAGAZINE FOR TODAY'S LIFESTYLE

# Insight

**WIN**  
NATURAL FACE  
LIFT, BOOKS  
& CD'S

SEPTEMBER 2008  
\$6.95 inc GST

**The Secret  
Life of Your  
Psyche**

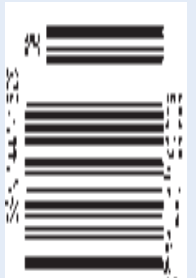
**How to  
Heal with  
Visionary Art**

**Learn the  
Rules of  
Karma Law  
& Attraction**

**Ghostly  
Guests &  
Nearing Death  
Awareness**



## THE OTHER SIDE OF ANGELINA JOLIE



### Inside this Issue

History of Crystals • Making Your Home Eco-Friendly • Spiritual Bali • Reader Survey

# Insight

## September

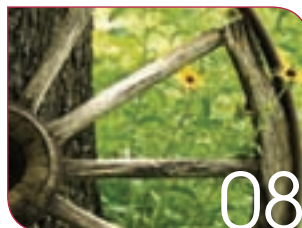
# CONTENTS

### COVER STORIES

- The Other Side Of Angelina Jolie** 04  
By Katie Loveday
- Karma Law & Attraction** 08  
By Jennifer Edwards
- Nearing Death Awareness** 16  
By Wendy Bunning
- The Secret Life of Psyche** 20  
By Ven Tenzin Chonyi (Dr Diana Taylor)
- Healing with Visionary Art** 24  
By Juliette West



04



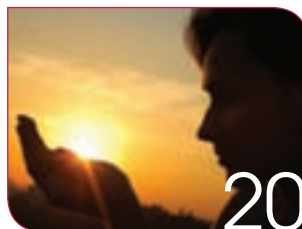
08



11

### REGULARS

- September Diary** 31
- Holistic Home** 32  
Making Your Home Eco-Friendly  
By Karen Billington
- Travel** 34  
Spiritual Bali  
By Katie Loveday
- My Wish List** 35  
Everything you could ever want
- Psychic Jade-Sky** 36
- Spirit Light Reflections** 39  
Your Earth Library  
By Sue Hasanjee
- Nutrition** 41  
Grilled Spanish Omelette  
By Juanita Emmerton
- Your Say** 42  
A Message from the Grandmothers



20



24



26

### FEATURES

- 11 Quantum BioEnergetics**  
By Melissa Hocking
- 14 The Human Crystal**  
By Justin Moikeha Asar
- 18 The Ego Writes Checks We Can Never Cash**  
By Nouk Sanchez
- 22 Save the Koala, Save the Land!**  
By Megan Mummery
- 26 Amazing Reflexology**  
By Jan Williams
- 28 Laughing Your Way to Health!**  
By Merv Neal
- 29 Reader Survey**

### REGULARS

- 43 Pagan Kali-Ma**  
By Frances Billingham
- 44 Crystals**  
A Brief History of Crystals  
By Suzy Lily
- 46 Horoscopes**  
By Charyn McLean
- 48 Planets**  
By Richard Giles
- 50 Sacred Wisdom Soul Age**  
By Elizabeth Peru
- 52 Look, See, Hear**  
Reviews
- 53 Insight Directory**
- 56 Subscribe Now and Win**

### Insight Publishing's Philosophy is Simple.

**Honesty**  
**Open Mindedness**  
**Willingness**

Personal beliefs and ownership do not dictate the content of this magazine. We aim to present informative reading written by people within the industry for people who like to make informed decisions. We believe every opinion, whether it comes from within or from outside influences, has the right to be expressed. Our magazines offer respectful forums for the education and empowerment of all people.

**Insight supports 100% recycling of all waste paper, solvents and printing plates. Our magazines are printed on Sustainable Forests Paper using soy-based inks.**